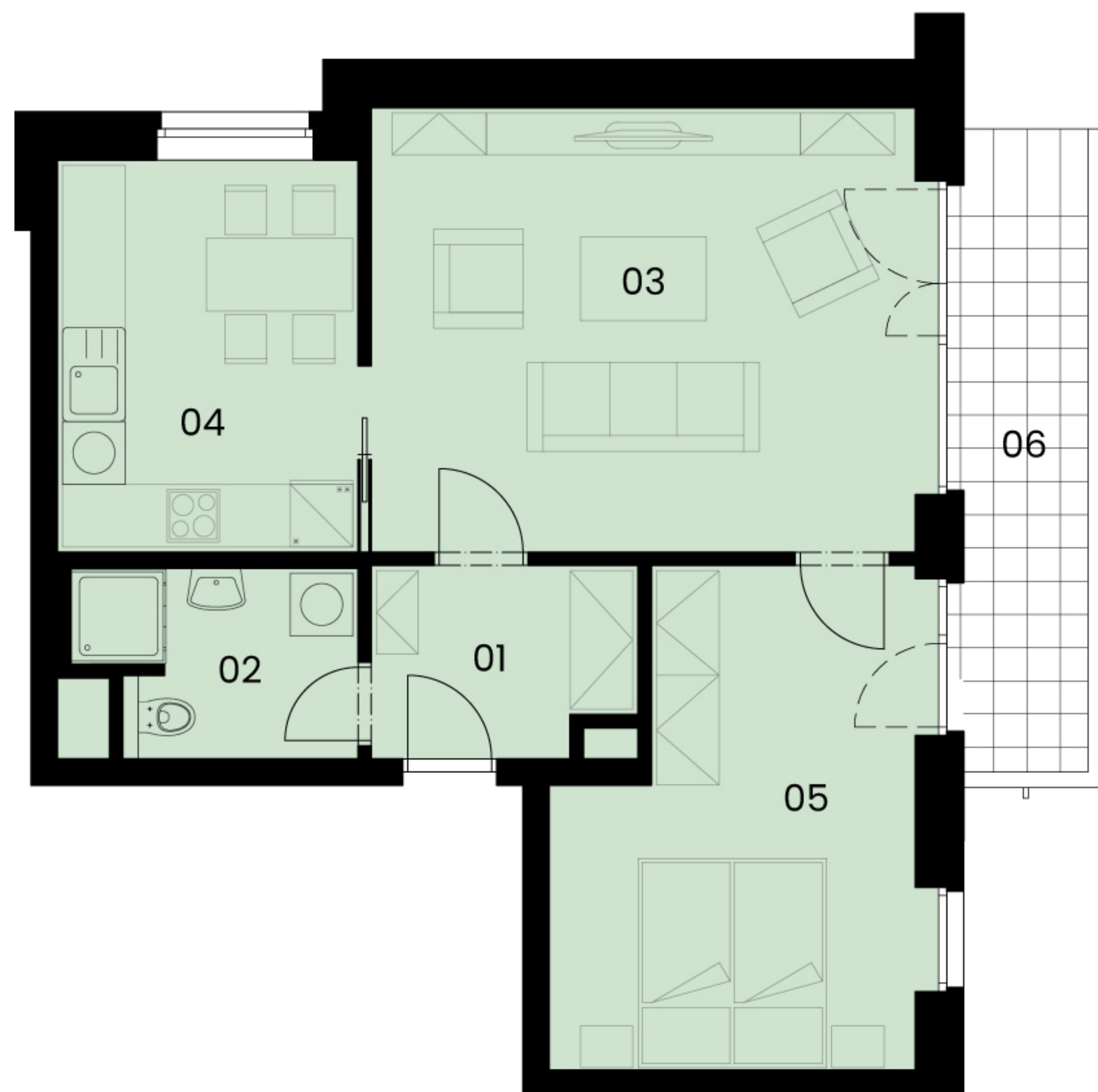


Podlaží: 3.NP

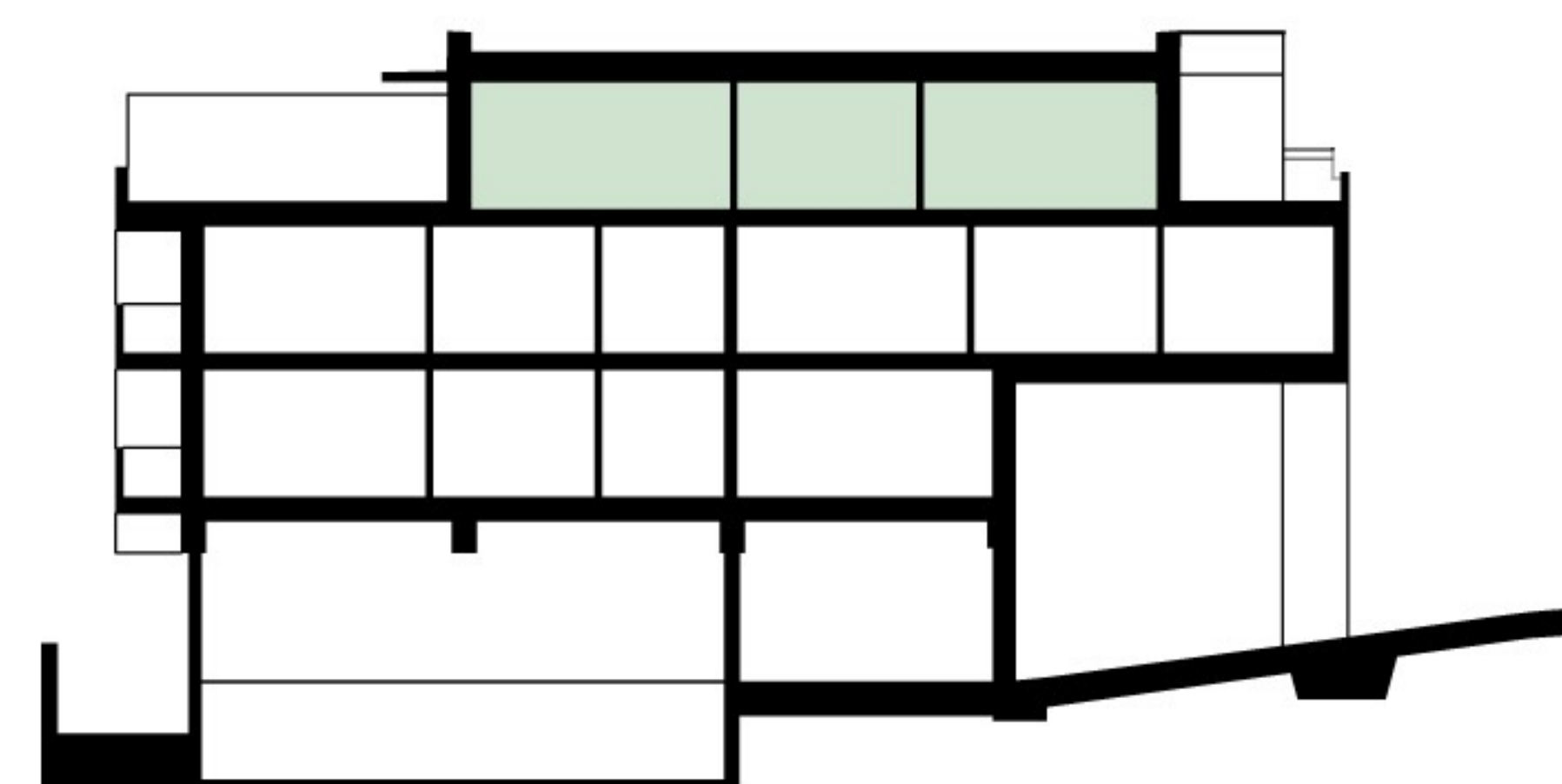
Dispozice: 2+1

Užitná plocha: 68,85 m²

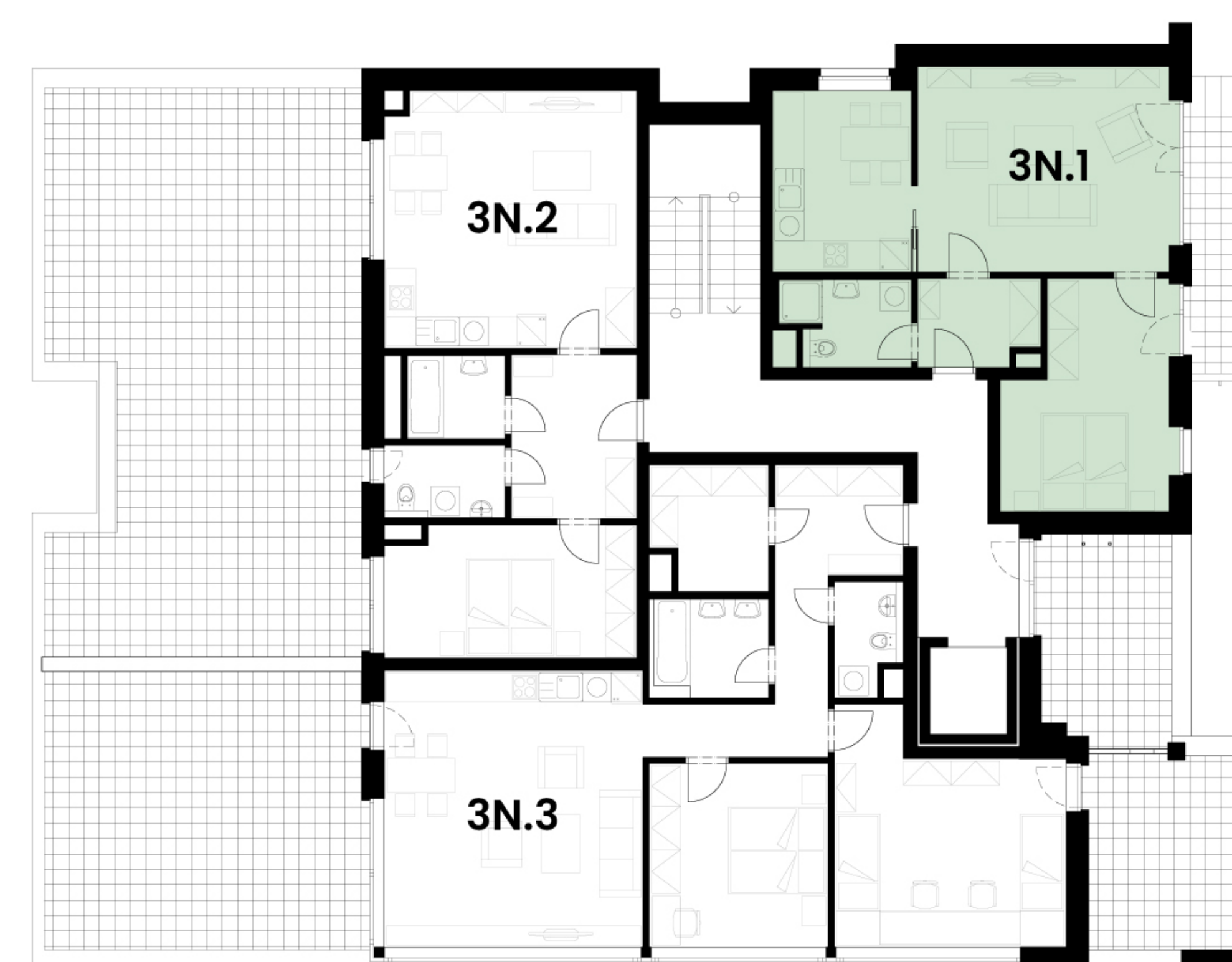
PŮDORYS



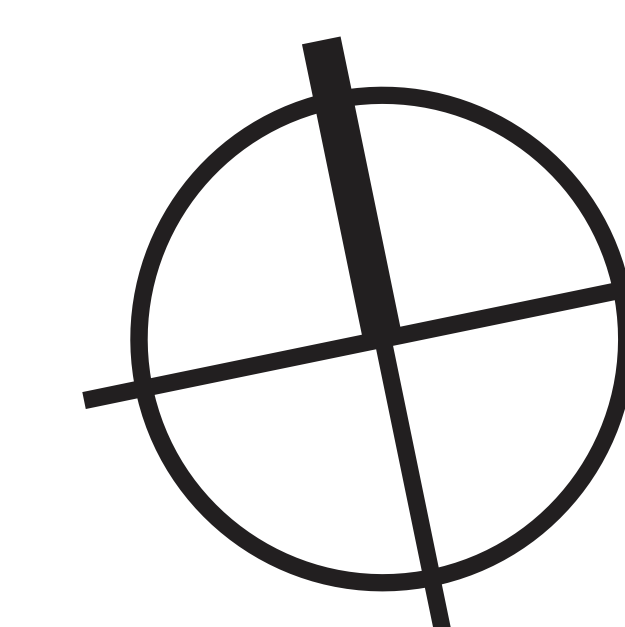
SITUACE



PODLAŽÍ



| č. | Místnost | m ² |
|----------------------------|---------------|----------------|
| 01 | Chodba | 4,77 |
| 02 | Koupelna + WC | 4,68 |
| 03 | Obývací pokoj | 22,87 |
| 04 | Kuchyň | 10,89 |
| 05 | Ložnice | 15,39 |
| Celková plocha bytu | | 58,60 |
| 06 | Balkon | 8,01 |
| Sklep | | 2,24 |
| Užitná plocha bytu | | 68,85 |



Velmi
úsporná

B